



Palmer Crescent, Leighton Buzzard, LU7 4HT

£339,995



Palmer Crescent, Leighton Buzzard, LU7 4HT

Floor Plan

- Three Bedroom Family Home
- Completed Upper Chain
- Driveway Parking to Front
- Very Spacious Lounge/Dining Area
- Separate Kitchen Space
- Popular Billington Park Development
- Excellent For Commuting to M1 & A5
- Downstairs WC
- Perfect Family Home or First Time Buy
- Very Short Walk to Astral Park

Positioned within a quiet set back position in the popular Billington Park development, just a short walk to the picturesque Astral Park & Lake, is this well presented, three bedroom end of terraced family home which comes with a completed upper chain and ready to move into.

The property offers spacious accommodation throughout, arranged over two floors, with a large loft space providing additional storage. On the ground floor, the layout includes an entrance hallway with a convenient downstairs WC and access to the central living / dining room. Additionally there is a separate kitchen space.

Ascending to the first floor landing, there are three bedrooms (two doubles and a versatile single or guest bedroom), an airing cupboard and the family bathroom. The master bedroom stands out as a particularly generous space, complete with fitted wardrobes and a dressing table.

To the front of the property is a low maintenance garden laid to lawn and a paved driveway, as well as side access leading to the back. At the rear of the property is the garden which again comes low maintenance, fully enclosed and includes a paved patio seating area, central lawn section and decorative borders.

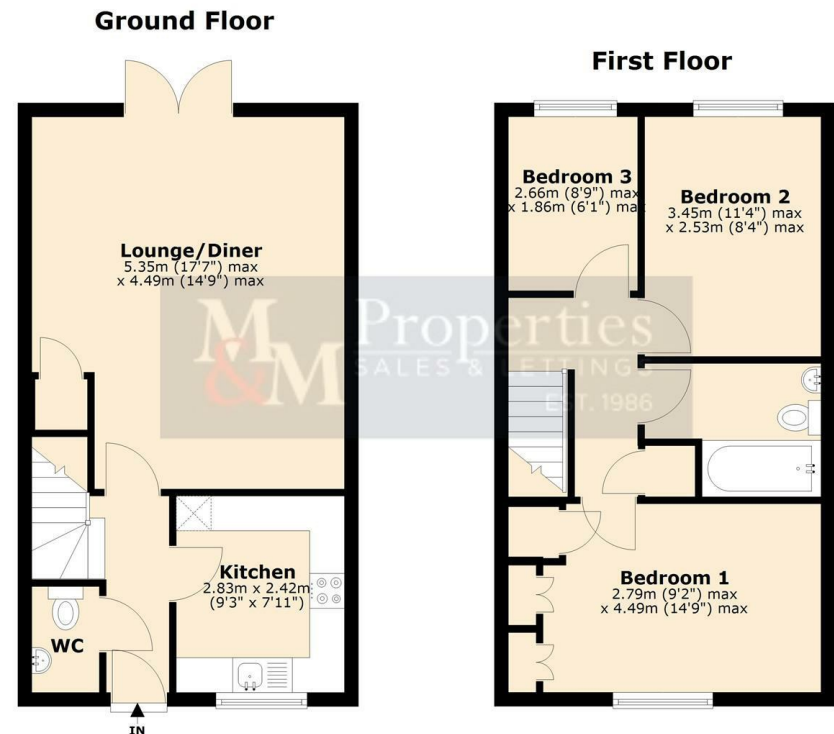
The property has mains water, sewerage and drainage connected. Heating is by way of mains gas to radiator powered by a gas boiler. There is mains electricity connected.

Viewing

Please contact our Leighton Buzzard Office on 01525 377733.

If you wish to arrange a viewing appointment for this property or require further information.

IMPORTANT: Whilst we aim to make our details accurate and reliable, if there is any point of particular concern to you, please contact the office. The apparatus, equipment, fittings and services have not been checked and therefore it is in the purchaser's interest to establish the working condition of the appliance included. Personal items such as furnishings which may be shown in the photographs are not included in the asking price. No survey has been carried out by M & M Properties. Measurements have a tolerance of +/- 3". Please note that this floorplan has not been drawn to scale and is therefore for room layout purposes only. It does not constitute or form part of a contract. Doors may be hung in opposite directions.



27/29 Hockliffe Street, Leighton Buzzard - LU7 1EZ

Sales: 01525 377733 - Lettings: 01525 371997

sales@mandmproperties.co.uk - lettings@mandmproperties.co.uk

LOCAL PEOPLE WORKING FOR YOU